

## Special Service Provider for Mobile Ultra-High Pressure Water Jetting Technology

We remove incrustations, lime and concrete deposits, roots, wood, bitumen and grease, GRP hose liners as well as needle felt liners and other obstacles such as foreign bodies made of steel and reinforced concrete from pipelines. We also prepare the pipes for your liner installation.



Your contact:

**Johann Galinsky**  
International Sales Manager

Phone: +49 1522 261 74 42

E-Mail: [j.galinsky@mauerspecht.de](mailto:j.galinsky@mauerspecht.de)

**MAUERSPECHT GmbH**

An der Walze 15

01640 Coswig

[www.mauerspecht.de](http://www.mauerspecht.de)



**ULTRA HIGH-PRESSURE.  
OUR CRAFT.  
YOUR SOLUTION.**



## Sewer rehabilitation with ultra-high pressure water jet robots

In order to speed up the preparation for sewer refurbishment, Mauerspecht has developed extremely **efficient ultra-high pressure water-jet robots**. Due to numerous adjustable parameters, the damage to the old pipe substance during the removal of solid deposits is usually significantly lower compared to conventional methods. Due to constant camera monitoring during the cleaning and rehabilitation process, we ensure optimal results.

The comprehensive **know-how from 25 years** of working with UHP has flowed into the development of **Drain-Jet-Robotics® technology**, our robotic ultra-high pressure water-jetting technology.

This enables us to cover a wide spectrum within the sewer using our technology:

- From 100 mm / 4" up to 1300 mm / 51" and egg-shaped profile of similar size.
- All common sewer profiles and numerous special profiles.
- Maximum pipe length: 300 metres.

## Before/after comparison of a sewer renovation



## Insights into the pipe condition and renovation technology



Heavy root growth in stream culvert 600 mm



Incrustations in bricked egg-shaped sewer (ellipse) 800/1290 mm



Concrete pipe 900 mm stream piping with limescale



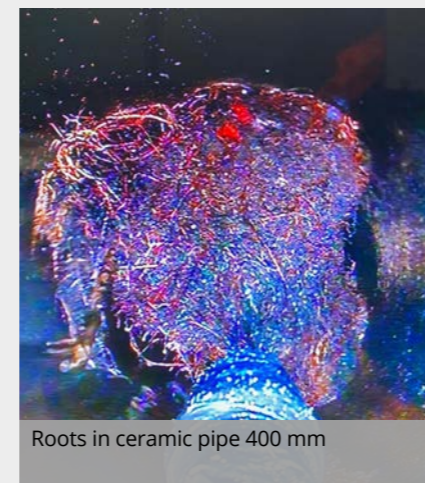
GFRP liner to be removed from eggshaped profile 360/450 mm



Cut GFRP liner from 600 mm with cement mortar lining



Removed GFRP liner from old pipe 210 mm



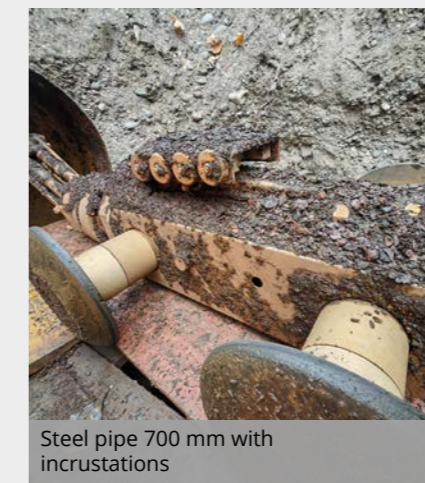
Roots in ceramic pipe 400 mm



Brick egg profile 933/1400 mm with incrustations



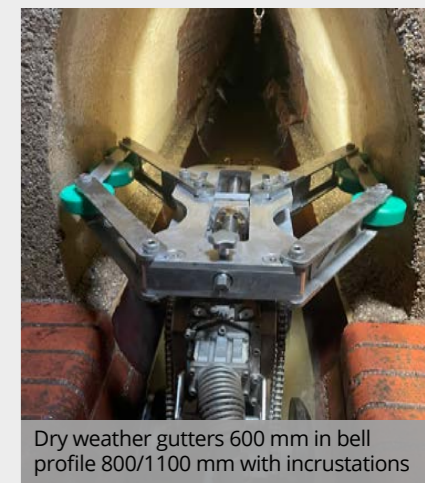
Dissolved lime with growth layers



Steel pipe 700 mm with incrustations



Abrasively cut steel pipe filled with H-beam and concrete



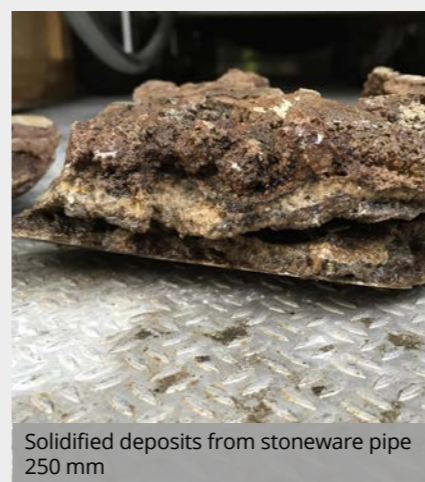
Dry weather gutters 600 mm in bell profile 800/1100 mm with incrustations



Concrete-like material removed from a 400 mm pipe



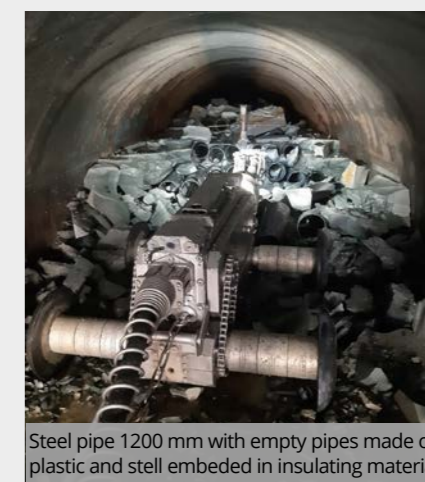
Concrete suspension in PVC pipe 400 mm



Solidified deposits from stoneware pipe 250 mm



Flowable fill (grout) and empty ducts 610 mm



Steel pipe 1200 mm with empty pipes made of plastic and steel embedded in insulating material



Section of PE liner cut from within 250 mm